

## **Cadder Parish Church**

### **Intimations and News - 19.11.23**

**A warm welcome** to our Morning Service led by Rev John MacGregor and Chris Gordon - Probationer minister - music led by Javier Jose Ucendo Malo (MMus). We are delighted to welcome Miriam Rana - from Daisy Chain Early Years Project in Govanhill. Today is Social Care Sunday and we will focus on the encouraging work of CrossReach.

The Kirk Session decided that from this Sunday, **the offering plate** will not be passed around during the service; for those who give their offering through the open plate, there will be an offering bag in the vestibule, at the entrance to the church, for entry and retreat from the service.

**Next Sunday** - 26<sup>th</sup> November - the service will be conducted by Chris Gordon - probationer minister - and he will be covering pastorally from 26<sup>th</sup> November - 2<sup>nd</sup> December.

**Teas & Coffees** will be served after the service today in the North Hall. Going forward, we need volunteers to help with serving the teas and also volunteers for reading the lessons on a Sunday morning.

**Funeral** It is with sadness that I intimate the death of Mrs Peggy Dawson. Peggy's funeral service is arranged for Saturday 2<sup>nd</sup> December at 10.30 a.m. at Clydebank Crematorium. I commend her family and friends to your prayers.

**Kirkintilloch Male Voice Choir** - In Concert - Cadder Parish Church - this afternoon - Sunday 19<sup>th</sup> November at 3 p.m. Donations welcome - all proceeds in aid of the Guide Dogs for the Blind Association.

**Cadder Coffee Shop** Tuesday, Wed, Thur 10 a.m. - 2 p.m. and Friday 10-12 noon. A warm welcome awaits you.

### **Caring for Creation Group**

**Our next open meeting** is on Wednesday 22<sup>nd</sup> November at 7.00 p.m. in the South Hall.

Rona Gold will be coming along to tell us about the benefits of **Renewable Energy** and the obstacles to be faced in bringing a project to fruition.

**The next Muddy Church** will be on Sunday 26<sup>th</sup> November at 2.00 p.m.

Children should bring their Parents, Grandparents and family along with snacks to the Church and after a short walk and our snacks, we will explore all the homes we have made and sited round the churchyard to protect insects and animals over the winter.

**Guild** - The Guild coffee morning is on this Saturday 25th November from 10 a.m. to 12 noon. Tickets available from Committee or coffee shop priced £4.00.

The Guild's next meeting is on Thursday 30th November at 7 p.m. in the South Halls. This is a joint meeting with the Guilds from Kenmure and Springfield Cambridge Churches. This is a musical night entertainment from Euan Russell and Dianne Kurth.

### **Care and Fellowship**

**Shoe Box Appeal** - Mary and Rebecca are delighted that 80 boxes have now been distributed to be filled. If you still have a box to return, please contact Mary or Rebecca.

**Film Night** on Friday 8th of December 7 p.m. for 7.30 p.m. in Cadder North hall. The film is *Christmas with Tucker* and tickets are £5 from members of the Fellowship group.

**Gift Service** on Sunday 10th December. This year we are supporting two charities, Women's Aid with pyjamas for their children and Daisy Chain with sensory toys for their children.

Janet Johnstone will be outside at the end of the service with details of both types of donations.

**Early Fellowship Zoom Meeting** – Tue and Thur at 9.30 – 10 a.m. - ZOOMED from the chapel in the South Hall, but those who prefer an in-person meeting will be able to join with the minister there. You are very welcome to join us as we listen to God's Word, pray for Christian Aid and Cross Reach, World Mission and also for our Church and community.

The **Pastoral Care Book** is available for names of anyone who would benefit from a visit. It will be positioned outside the vestry door. You can also contact the minister, or Pat Marwick or Janet Johnstone – (Care and Fellowship Leaders)

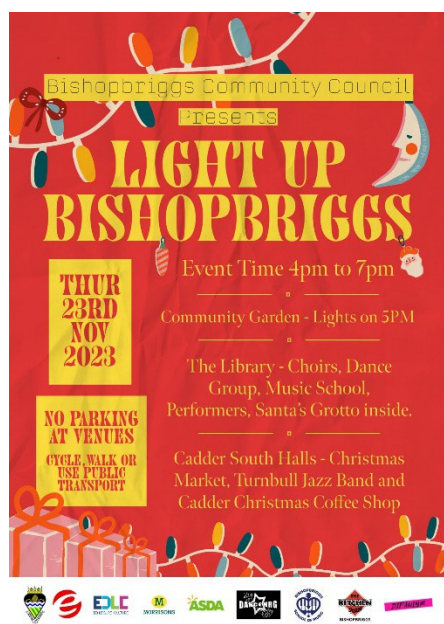
**FOODBANK** - If you wish to donate to the local foodbank, you can bring your donations of food to the church.

## 92nd Glasgow Company Girls' Brigade – Tuesday

Explorers - P1 to P3 - 6.15 - 7.30 p.m.  
 Juniors - P4 to P7 - 6.30 - 8.00 p.m.  
 Brigaders - S1 to S6 - 7.30 - 9.00 p.m.

## 212th Boys' Brigade

Anchor Boys (P1-3) Monday 6-7 p.m.  
 Junior Section (P4-6) Monday 7.15-8.30 p.m.  
 Company/Senior Section (P7-S6) Friday 7-9 p.m.



## Christmas Events/Services

December 3<sup>rd</sup> – First Sunday of Advent  
 December 3<sup>rd</sup> – Griefshare Service 2 p.m.  
 December 10<sup>th</sup> – Gift Service 10.30 a.m.  
 December 17<sup>th</sup> Nativity Service 10.30 a.m.  
 Boys' Brigade serving a light lunch after the Nativity service in the north hall  
 December 17<sup>th</sup> – Cadder Singers 7 p.m.  
 Church

December 24<sup>th</sup> – Christmas Service – 10.30 a.m.

December 24<sup>th</sup> – Christingle Service – 4 p.m. – South Hall

December 24<sup>th</sup> – Watchnight Service – 11.30 p.m.

December 25<sup>th</sup> – Christmas Day Service - 10.30 a.m.

Sunday 31<sup>st</sup> – New Year's Eve Service – 10.30 a.m.